

Logix 5.0[®]

New Features and Users in the News – December 2013



Logistix Solutions
On-Demand Solutions for Logistics Professionals

Logix 5.0[®] has been a favorite software tool for commercial real estate services companies worldwide helping pick the right site location for the right business criteria at the right cost.

A new Google[®] Map interface makes Logix an even stronger tool for visualizing real estate properties and their proximity to transportation infrastructure and key demographics. Site Selection algorithms optimize location and provide valuable financial sensitivity analysis to help in ranking properties and their value to prospective tenants.

This month's New Features and Users in the News focuses on this specialized application area and one of our long-time users, Jones Lang LaSalle.

Robert Camozzo
CEO

www.logistixsolutions.com
(571) 426 5951
info@logistixsolutions.com

New Features and Users in the News – December 2013

In This Issue:

✚ **Technology-Driven Site Selection** – Jones Lang LaSalle (JLL) provides property assessment, research, financial analysis and key value metrics for their customers and prospective tenants. See how Logix and Reverse Location Selection spotlight the right properties at the right overall cost.

✚ **New Google® Maps v3 Interface** – Google® has improved their universally used mapping application and so we raised our game as well. The latest Logix updates provide new icons and better graphics for your presentations.

Jones Lang LaSalle uses Logix® for **site selection** and comparison of commercial properties – distribution centers, manufacturing sites, retail stores and shopping malls – based on key economic and geographic metrics such as transportation costs, proximity to ports, intermodal facilities and transportation infrastructure as well as leasing costs, capacity, labor rates, taxes and overall suitability.

Importing customer demographics, economic factors, financial data and available properties and their lease rates, JLL couples this data with metrics on transportation costs to optimally select the site location that provides the best value and customer service or compares all the options side by side.

Using a process JLL calls **Reverse Location Selection (RLS)** and using data, charts and reports from Logix including average weighted distance or maximum distance from customers or markets sensitivity to transportation costs, lease rates, labor costs, and other factors, JLL then ranks each property in terms of viability and preference for each client.

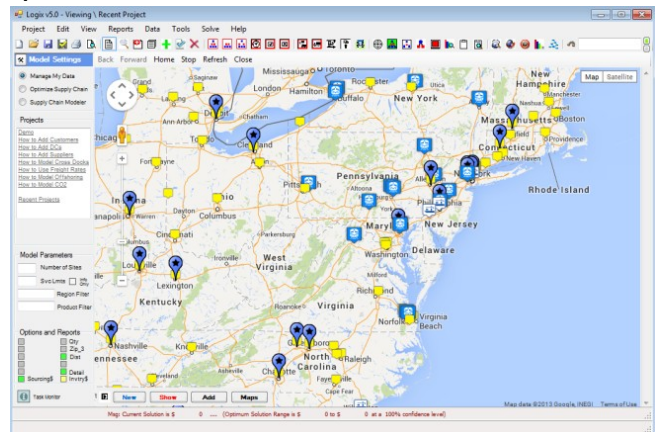
The end result is a highly accurate operating cost analysis of each property with a look forward as demographics and demand patterns change. Coupled with maps, reports, charts and other output from the Logix application, JLL can present highly specific and quantifiable information for each of its clients.



JONES LANG LASALLE IS A FINANCIAL AND PROFESSIONAL SERVICES FIRM SPECIALIZING IN COMMERCIAL REAL ESTATE SERVICES AND INVESTMENT MANAGEMENT.

JONES LANG LASALLE PROVIDES KEY INDUSTRY KNOWLEDGE AND RESEARCH FOR PROPERTY MANAGEMENT AND ASSESSMENT SUPPORTED BY TECHNOLOGY LIKE LOGISTIX SOLUTIONS' SITE LOCATION ANALYSIS TOOL. LOGIX HELPS IDENTIFY, FILTER, SCORE AND RANK POSSIBLE LOCATIONS BASED ON MULTIPLE CRITERIA, AND WEIGHT WHAT MATTERS MOST TO THEIR CLIENTS' BUSINESS.

CONTACT INFO@LOGISTIXSOLUTIONS.COM OR 571 426 5951 FOR MORE INFORMATION.



Logix® Distribution Network Design Software with new Google® Maps (version 3)

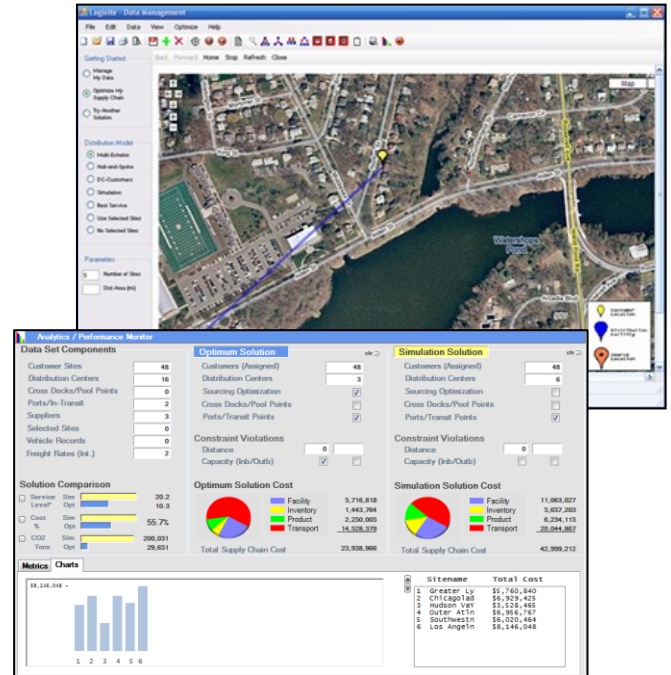
New and Enhanced Features in Logix5.0

Reverse Location Selection Analysis – Jones Lang LaSalle uses Logix and an integrated process called Reverse Location Selection (RLS) which encompasses a comprehensive group of factors prospective tenants use to evaluate real estate alternatives during the location-site selection process. RLS Analysis compares competitive factors based on:

- Proximity to highways, ports, intermodal facilities
- Workforce/ Community data
- Transportation costs
- Labor wage rates and skill set availability
- Taxes and incentives
- Geographic disparity
- Real estate availability and cost

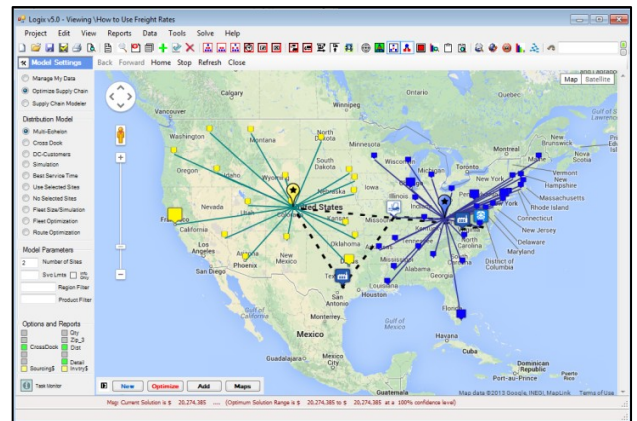
RLS output compares each property or facility including key financial information such as transport costs, fixed and variable facility and warehousing costs and any inbound port and drayage fees.

- Collection of qualitative and quantitative data
- Average Weighted Distance to customers and markets, Cost per Shipment or ship unit
- Results are stated as a score from 0 to 100 as well as in dollar amounts
- Each data point is weighted by either financial significance or industry metrics



New Google® Map Features – new icons and other map features help users visualize key metrics such as proximity to ports, intermodal facilities and transportation infrastructure while comparing properties side by side.

Map displays feature multiple levels, color coded distribution areas and satellite highway views to help users visualize answers to all-important questions like “where’s the closest highway on-ramp or intermodal facility to the optimally located distribution facility?”



For more information on the Logistix Solutions suite of products, visit our website at www.logistixsolutions.com or contact Logistix Solutions at 571.426.5951 or e-mail info@logistixsolutions.com.

LOGISTIX SOLUTIONS – Technology for Logistics Professionals

Logistix Solutions was established in 2006 as a software and consulting company to provide premier technology solutions and in-depth industry knowledge for logistics professionals. We offer award-winning, on-demand Supply Chain Planning and Execution applications at a revolutionary value for rapid ROI and benefit realization.

- ✚ *Supply Chain Planning and Execution (SCP&E) software solutions offered:*
 - *Distribution Network Design and Supply Chain Optimization*
 - *Sourcing and Procurement Optimization*
 - *Routing and Scheduling Fleet Optimization*
 - *Transportation Resource Scheduling and Execution*
- ✚ *Support, training and consulting services provided by experienced supply chain practitioners and logistics software experts.*

Based on extensive development working with Fortune 1000 companies, Logistix Solutions provides full-featured, on-demand supply chain solutions and consulting services for commercial real estate services firms, retailers, manufacturers, third party logistics providers, consultants, food and beverage and other distributors to support strategic planning and logistics execution requirements.



For more information on the Logistix Solutions suite of products, visit our website at www.logistixsolutions.com
or contact Logistix Solutions at 571.426.5951 or e-mail info@logistixsolutions.com.